



Puzzling out
GONDWANNA

Bangkok, Thailand 2017

November 7th - 21st, 2017

Bangkok, THAILAND

Second Circular

The IAGR 2017 Annual Convention

The 16th Gondwana International Conference

The 14th International Conference on Gondwana to Asia



Puzzling out
GONDWANA

Preface

On behalf of organizing committee, we apologize for lately distribution of the second circular due to the lost our beloved king, King Bhumibol Adulyadej (Rama IX). Now, we are going on the way for the 16th Gondwana International Conference, the 14th International Conference on Gondwana to Asia and the IAGR 2017 Annual Convention. So far, we would like to confirm that the conferences and the pre-, mid-, and post- field excursion will be held on November 7th – 21st, 2017 at Asia Hotel, Bangkok. There are many routes of field excursions around Thailand for your participation.

In this circular, we would like to inform you about themes cover, scientific program, important dates, all associated committees, field excursion routes, registration fees, and accommodations. The detail of payment will be informed in next circular.

We welcome all of you to the 16th Gondwana International Conference, the 14th International Conference on Gondwana to Asia, and the IAGR 2017 Annual Convention in Thailand. We hope you will join us. Let's puzzling out Gondwana. If you have any question, please do not hesitate to contact us via official email: SecretaryGondwana.16@gmail.com. See you soon there.

Themes Cover

1. Geophysical evidences for Gondwana assembly and fragmentation
2. Global event markers during Gondwana evolution
3. Paleontology and Biodiversity during Gondwana period
4. Mixed floras: Gondwana-Laurasia biotic interchanges
5. Sedimentary record and sea level changes
6. Correlation and age constraints
7. Permian-Triassic boundary events
8. Palaeoclimatic events: biological, geochemical, sedimentological and isotopic proxies
9. Palaeofires in Gondwana
10. Energy resources
11. Tectonic Geography of the Amalgamation of Gondwana
12. Pre-Gondwanan Supercontinents
13. Tectonic Evolution of Gondwana
14. Structure and Tectonic Record of Break-Up of eastern Gondwana and its Evolution into Asia

Scientific Program & Official Language

The official language of the conference will be English. We will provide a Windows PC and projector in the symposium and regular sessions. Please manage your presentation with Microsoft Power Point, version 10 (?).

- **Oral presentation:** A Windows PC equipped with MS Power Point and projector will be available in the symposium venue. For Macintosh users, please bring your own computer to avoid unpredictable problems. Please turn in the file at the desk before your presentation.

- **Regular session:** 25 minutes, including discussion

- **Poster presentation :** A0-size boards for posters will be available in the poster room.

You should hang your poster in the morning on **Monday 13th November 2017.**

Important Dates

- **Registration:** We request you promptly registered online via an official website (<http://dmr.go.th/gondwana/registration.php>). Initially, the fee is paid via bank draft to **Krung Thai Bank**, Account Type: **Current Account**, Account Name: **The cost of the training of Department of Mineral Resources** Account Number: **985-1-74174-4**
The online payment, alternatively, will be announced in next circular.

Early Bird Registration: **Before 7th September 2017**

Regular Registration: **After on 7th September 2017**

- **Session Proposals:** You should sent to the Organizing Committee's Secretariat before **30th April, 2017.**

- **Abstracts:** Deadline for both oral and poster presentations are on **31st July, 2017.**
The abstracts should be informative, typed in 12 point Times New Roman font in double space, 400 word limit, mentioning the title, name(s) of the author(s) with their affiliation(s) and e-mail address(es). Extended abstracts may include relevant maps, figures and references.

The Organizing Secretary Team

E-mail: SecretaryGondwana.16@gmail.com

Website: <http://www.dmr.go.th>

Facebook: The 16th Gondwana

If you have any question, please do not hesitate to ask us.

Organizing Committee

CHAIRMAN

Tawsaporn Nuchanong

Director General, the Department of Mineral Resources

VICE CHAIRMAN

Somma Techawarn

Deputy Director General, the Department of Mineral Resources

Niwat Maneekut

Deputy Director General, the Department of Mineral Resources

COMMITTEE

Manop Raksasakulwong

Benja Sekteera

Chaiporn Siripornpibul

Montri Luengingkasoot

Somboon Khositanont

Surachai Siripongsatian

Boonroong Suangarmiam

Torsak Prasomsab

Suree Teerarungsigul

Tawan Sukko

Tinnakorn TaTong

Nimit Sornklang

Thawatchai Tepsuwan

Thasinee Charoentitirat

Weerapan Srichan

Natthawiroj Silaratana

Dhiti Tulyatid

Anisong Chitnarin

Pol Chaodumrong

Adichat Surinkum

SECRETARY

Naramase Teerarungsigul

Senior Expert (Mineral Resources Management)

Apsorn Sardsud

Senior Geologist

IAGR Scientific committee

M.Santosh
Li Wan
Alan Collins
H. M. Rajesh
Inna Safonova
Toshiaki Tsunogae
Mingguo Zhai
Jie Li
Qiongyan Yang
Peter Cawood
Maarten de Wit
Chris Clark
Renata Schmitt
Joachim Jacobs
Cesar Casquet
Sarbani Patranabis-Deb
Yunpeng Dong
Joe Meert

China University of Geoscience (Beijing), China
China University of Geoscience (Beijing), China
The University of Adelaide, South Australia
Botswana International Univ. of Sci. & Tech
Russian Academy of Science, Russia
Tsukuba University, Japan
Chinese Academy of Science, China
China University of Geoscience (Beijing), China
China University of Geoscience (Beijing), China
Monash University, Australia
University of Cape Town, South Africa
Curtin University, Australia
Federal University of Rio de Janeiro, Brazil
University of Bergen, Norway
Madrid University, Spain
Indian Statistical Institute, Kolkata, India
Northwest University, China
Florida University, USA

Internal scientific committee

Chongpan Chonglakmani
Chaiyuth Khantaprab
Rucha Ingavat
Thanis Wongwanich
Montree Choowong
Pol Chaodumrong

Sirot Salyapongse
Apsorn Sardud
Thasinee Charoentitirat
Weerapan Srichan
Prayath Nantasin
Dhiti Tulyatid
Natthawiroj Silaratana
Pitsanupong Kanjanapayont
Clive Burrett
Zakaria Hamimi
Nigel C. Hughes
Shanchi Peng,

Paul Myrow
Katsumi Ueno

Suranaree University of Technology
Chulalongkorn University
Fossil Research Division, Department of Mineral Resources
Bureau of Geological Survey, Department of Mineral Resources
Chulalongkorn University
Senior Geologist, Bureau of Geological Survey Department of
Mineral Resources
Bureau of Geological Survey, Department of Mineral Resources
Fossil Research Division, Department of Mineral Resources
Chulalongkorn University
Chiang Mai University
Kasetsart University
Mahidol University
Chiang Mai University
Chulalongkorn University
University of Tasmania, Australia
Benha University, Egypt
University of California, Riverside
Nanjing Institute of Geology And Palaeontology Chinese
Academy of Sciences, China
Geology Department Colorado College
Fukuoka University

Schedule

7th - 11th November 2017 PRE - CONFERENCE FILED EXCURSION

7th - 11th November 2017

Main Palaeotethys (?)
in Northern Thailand

Chiang Mai - Lampang -
Uttaradit

Dr. Weerapan Srichan

10th - 12th November 2017

Tarutao - Satun Routes

Langkawi - Tarutao - Satun

Mr. Naramase Teerarungsigul

12th November 2017

⌚ 09.00- 18.00

Arrival of participants, accommodation at Asia Hotel

⌚ 18.00 – 19.00

Registration

13th November 2017

MEETING

⌚ 09.00 – 09.30

Opening Ceremony

⌚ 09.30 – 12.00

Presentation

⌚ 12.00 – 13.30

Lunch

⌚ 13.30 – 17.00

Presentation

⌚ 19.00 – 21.00

Welcome Dinner at Asia Hotel

⌚ 20.00 – 21.00

The IAGR 2017 Annual convention

14th November 2017

MEETING

⌚ 09.00 – 12.00

Presentation

⌚ 12.00 – 13.30

Lunch

⌚ 13.30 – 17.00

Presentation

15th November 2017

MID - CONFERENCE FILED EXCURSION

Bangkok cultural
one day trip with
Chao Phraya Cruise

Bangkok and Ayutthaya

Dr. Thasinee Charoenthitirat

16th - 17th November 2017 MEETING

⌚ 09.00 – 12.00

Presentation

⌚ 12.00 – 13.30

Lunch

⌚ 13.30 – 17.00

Presentation

18th - 21st November 2017 POST - CONFERENCE FIELD EXCURSION

18th-20th november 2017
An Expedition to the
East of Thailand

Chanthaburi-Rayong- Sa Kaeo

Dr. Thasinee Charoenthitirat

18th-21th november 2017
Geology of western
Thailand

Kanchanaburi

Dr. Prinya Putthapiban
Dr. Dhiti Tulyatid

Registration Price Fees

Conference		
Participants	Registration Fees	
	Early Bird Price	Regular Price
Regular Participant	14,000 THB/400 USD	17,500 THB/500 USD
Student	7,000 THB/200 USD	10,500 THB/300 USD
Accompanying Person	10,500 THB/300 USD	14,000 THB/400 USD

Remark:

Including: lunch/day (4 days), 2 break/day (4 days), and welcome party.
This does not yet include an accommodation during conference.

			Excursion				
			Excursion Route				
			Pre - Excursion		Mid - Excursion	Post - Excursion	
Registration Fees			① Chiang Mai - Lampang - Uttaradit	② Tarutao - Satun	③ Bangkok Cultural Trip with Chao Phraya Cruise	④ Chanthaburi - Rayong - Sa Kaeo	⑤ kanchanaburi
Regular Participant	Early Bird Fees	Share Room	21,000 THB/ 600 USD	21,000 THB/ 600 USD	8,750 THB/ 250 USD	12,250 THB/ 350 USD	6,300 THB/ 180 USD
		Share Room	21,000 THB/ 600 USD	21,000 THB/ 600 USD	8,750 THB/ 250 USD	12,250 THB/ 350 USD	5,250 THB/ 150 USD
	Regular Fees	Single Room	22,750 THB/ 650 USD	22,750 THB/ 650 USD	10,500 THB/ 300 USD	14,000 THB/ 400 USD	8,050 THB/ 230 USD
		Share Room	22,750 THB/ 650 USD	22,750 THB/ 650 USD	10,500 THB/ 300 USD	14,000 THB/ 400 USD	7,000 THB/ 200 USD

* Exchange Rate (approximate) 1US\$ equivalent to 35 Thai Baht (THB)

Remark:

Registration fee will initially be paid via the bank draft (detailed presented previously).
The alternative online payment will be informed in next circular.

Early Bird Registration: **Before 7th September 2017**

Regular Registration: **After on 7th September 2017**

1.Pre - Conference Field Excursion

Tuesday 7th - Saturday 11th November 2017

(Chiang Mai-Lampang-Uttaradit)

Main Palaeotethys (?) in the Northern Thailand

Day 1

Representative mafic-ultramafic rocks and limestone blocks in the Chiang Mai Suture

Day 2

Representative mafic-ultramafic rocks and limestone/sandstone blocks in the Chiang Mai Suture and Khun Tan Granite

Day 3

Permian Ngao Group & Triassic Lampang Group in the Sukhothai Fold Belt

Day 4

Mae Moh Coal Mine, Lampang Group and Pha Som metamorphic complex

Day 5

Pak Pad volcanic-Pha Luead Gabbro in serpentinite mélangé-Blue schist (Representative of Nan Suture)

Trip Leader

Dr. Weerapan Srirachan (Chiang Mai University)
and Department of Mineral Resources Regional Office 1 (Lampang)



Includes:

- Flight ticket round trip (Bangkok-Chiang Mai and Phisanulok-Bangkok)
- Transportation : Bus
- 2 Nights Accommodation
- All meals

Remark: The trip depends on the number of participants (minimum 30 persons).

2.Pre - Conference Field Excursion

Friday 10th - Sunday 12th November, 2017

Tarutao - Satun Routes

Day 1

Arrival of participants; at Hat Yai Airport
Stop 1. Devonian-Carboniferous-Permian succession at Km.11
Stop 2. Silurian-Devonian at Km.9
Stop 3. Stromatolite sites

Day 2

Stop 1. Trilobite Location, Cambrian succession at Ao Mo Rae
Stop 2. Ordovician limestone
Stop 3. Cambrian-Ordovician succession at Panta Malaca
Stop 4. View Point at Pha Tobu

Day 3

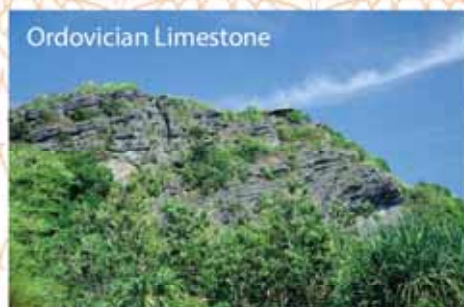
Stop 1. Cambrian-Ordovician Boundary succession at La Ngau
Leave to Hat Yai Airport

Trip Leader

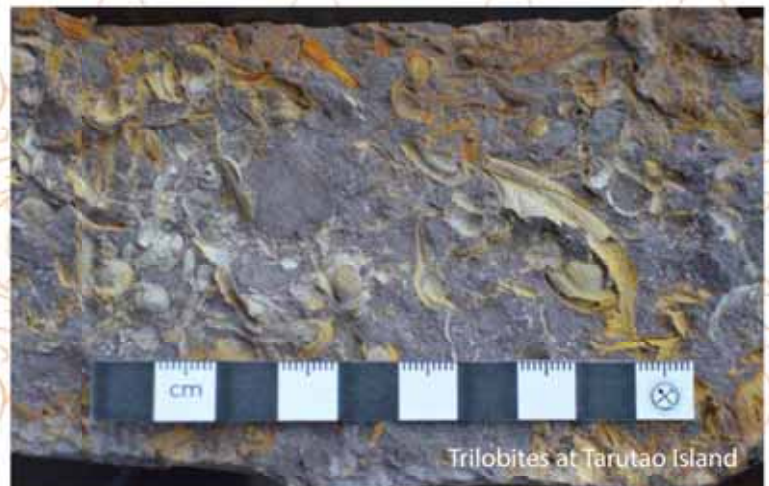
Mr. Naramase Teerarungsil (Division of Fossil Protection)
and Department of Mineral Resources Regional Office 4 (Surat Thani)



Stromatolite Site



Ordovician Limestone



Trilobites at Tarutao Island



Km. 11 site

Includes:

- Flight ticket round trip (Bangkok-Hat Yai-Bangkok)
- Transportation : Van, Ferry
- 2 Nights Accommodation
- All meals

Regular Fees
600 USD/
Person

Remark: The trip depends on the number of participants (minimum 30 persons).

3. Mid - Conference Field Excursion

Wednesday 15th November 2017

Bangkok Cultural One day trip with Chao Phraya Cruise

1-Day

A 1-Day Trip in Bangkok and Ayutthaya areas to get an introduction to the wealth of Thai culture and history.

The trip featuring a number of incredibly beautiful temples, shrines, and monuments offers a memorable Thai dining experience along the Chao Phraya River.

Trip Leader

Dr. Thasinee Charoenthitirat (Chulalongkorn University)
and Department of Mineral Resources



Regular Fees
300 USD/
Person

Includes :

All Meals, Transportation, and Entrance Fees.

The schedule may be subjected to change under certain circumstances.

Remark: The trip depends on the number of participants (minimum 30 persons).

4. Post - Conference Field Excursion

Saturday 18th - Sunday 20th November 2017

(Chanthaburi - Rayong - Sa Kaeo)

An Expedition to the Eastern Thailand

3 Days 2 Nights

A trip to broaden your understanding of the geological complexity of Pre- and Post-Triassic rocks in Chanthaburi-Rayong-Sa Keao.

The trip features the world-famous gem markets, local museums, authentic Thai food restaurants, and pristine beaches of the East.

Trip Leader

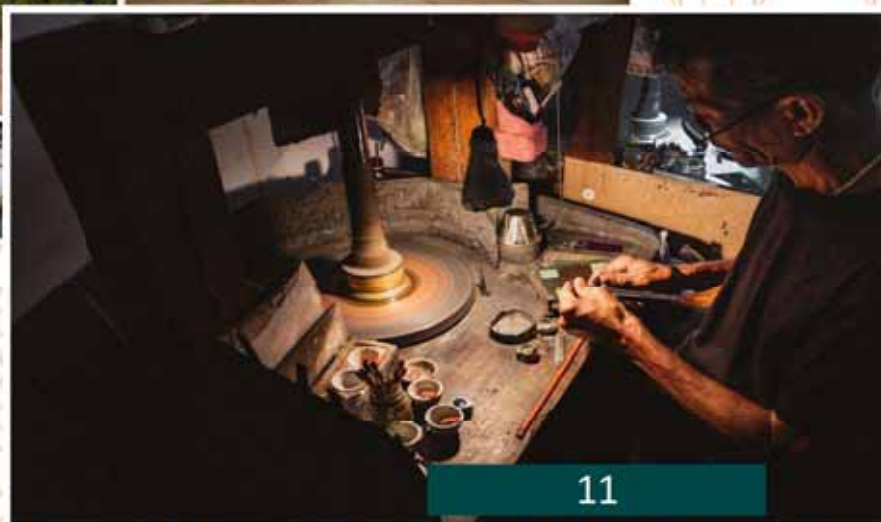
Dr. Thasinee Charoenthirat (Chulalongkorn University)
and Department of Mineral Resources Regional Office 3 (Rayong)



Includes :

All Meals, Transportation, Entrance Fees and 2 Nights Accommodation. The schedule may be subjected to change under certain circumstances.

Regular Fees
400 USD/
Person



Remark: The trip depends on the number of participants (minimum 40 persons).

5. Post - Conference Field Excursion

Saturday 18th - Tuesday 21st November, 2017

Kanchanaburi Geology of the Western Thailand

Day 1

Limestone quarry-Tamanao Limestone (Thungsong Group) and cross cutting pegmatite dike, contact aureole/marble, granites and cross cutting pegmatite veins, Ban Phu Num Ron, Thai-Myanmar border (Thavoy).

Day 2

Three Pagodas Fault scarp, Death railway and Krasae cave, Hellfire Pass World War II Museum, Wachiralongkorn Dam and Hin Dart hotspring.

Day 3

Upper most Middle Permian fossiliferous limestone Submarine fan of the Triassic shelf break, Cambrian Chao Nen Quartzite/Sandstone at Sri Nakharin Dam, thin bedded argillaceous Ordovician limestone, and Dolomite deposit.

Day 4

Sapphire bearing Quaternary basalt and Triassic deep sea ribbon chert, unconformable contact between Triassic ribbon chert and the Ordovician limestone and(?) on land petroleum oil field.

Trip Leader

Dr. Prinya Putthapiban, Dr. Dhiti Tulyatid and Mr. Sirot Salyapongse (Mahidol University) and Department of Mineral Resources Regional Office 3 (Rayong)

Regular Fees

Single room : 230 USD/Person

Share room : 200 USD/Person

Includes:

- Transportation: Bus
- 3 Nights Accommodation
- All Meals

Remark: The trip depends on the number of participants (minimum 30 persons).



ASIA HOTEL BANGKOK



 Asia Hotel Bangkok has a connecting pathway to the Bangkok sky Train Station(BTS) and locates in central area which has easily access through the business and shopping area in Bangkok Like Siam Center, Siam Paragon, Maboonklong Center (MBK) and Central World Plaza. Including by Airport Rail Link you can reach our hotel directly from Suvarnabhumi Airport, making your trip faster, easier and avoid traffic jam in Bangkok city. Further information about Airport rail link please visit Suvarnabhumi Airport Rail Link (SARL).

Transportation time between Asia Hotel and each destination

Don Muang international Airport

Car/Taxi: 45 Minutes

Public Bus: 75 Minutes

Airport Bus: 60 Minutes

(Rush hour 7.00-9.00 and 16.00-20.00 might take +1 hour)

Suvarnabhumi Airport (32 Kms.)

Car/Taxi: 45 Minutes

Airport Express Bus: 60 Minutes

Bus detail (recommend for 1 passenger only if more than this, taxi meter will be more convenient with almost same cost (300 -350 baht)) (Peak hour 7.00-9.00 and 16.00-20.00 might take +1 hour)





10

Puzzling out
GONDWANA



Organizers

International Association for Gondwana Research
Department of Mineral Resources, Thailand

Co-Organizers

